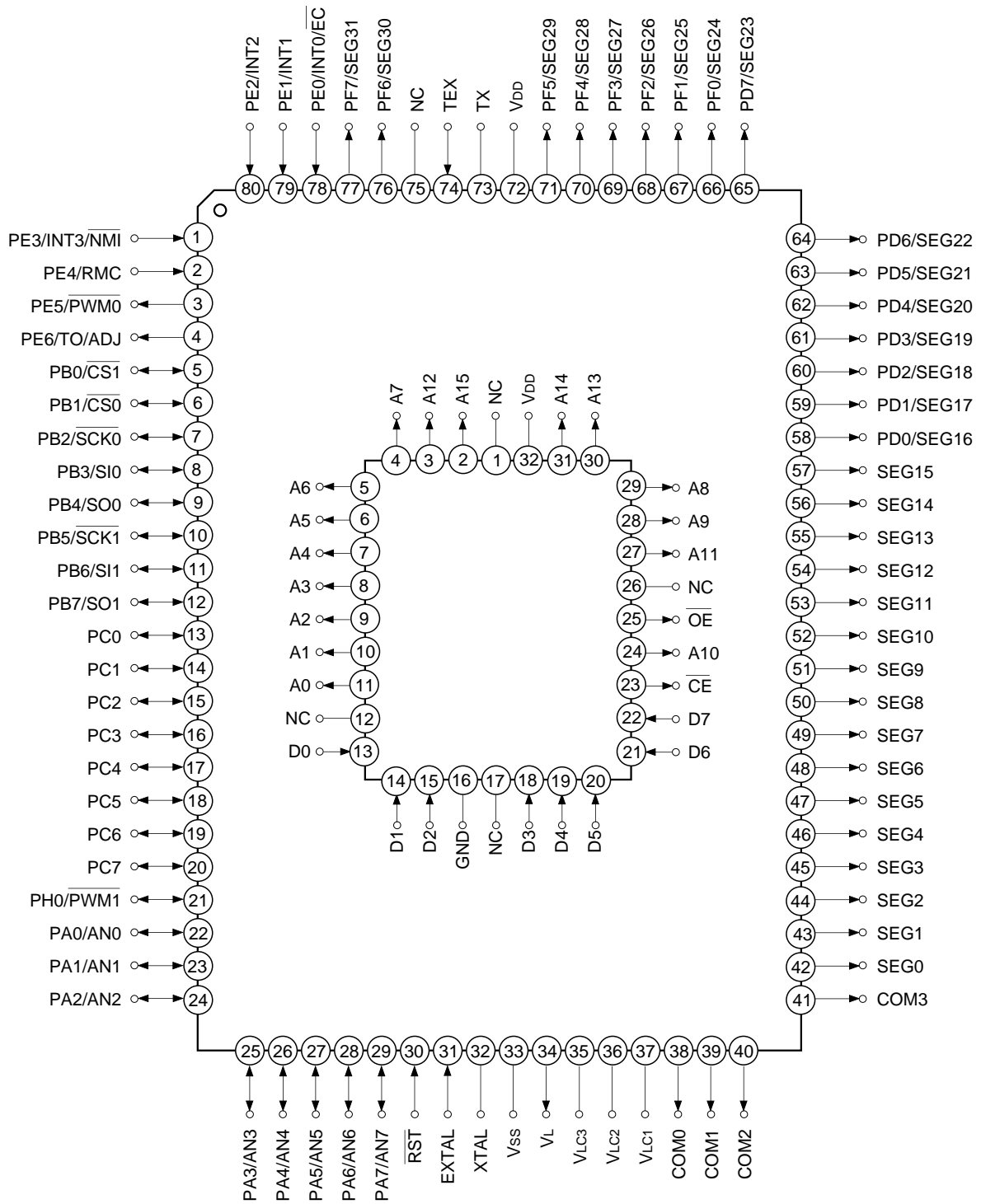
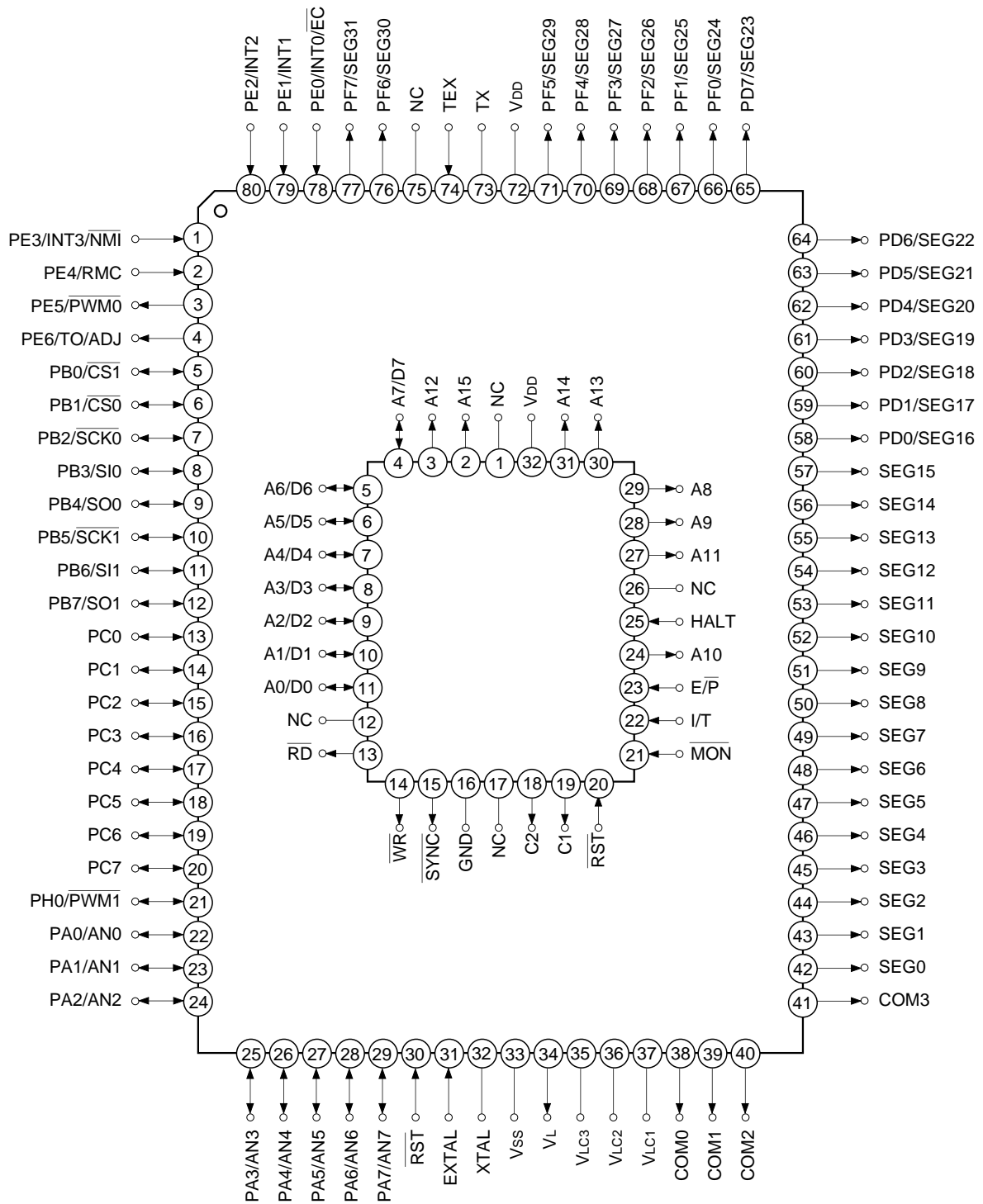


Pin Assignment in Piggyback Mode



Note) NC (Pin 75) is always connected to V_{DD}.

Pin Assignment in Evaluator Mode

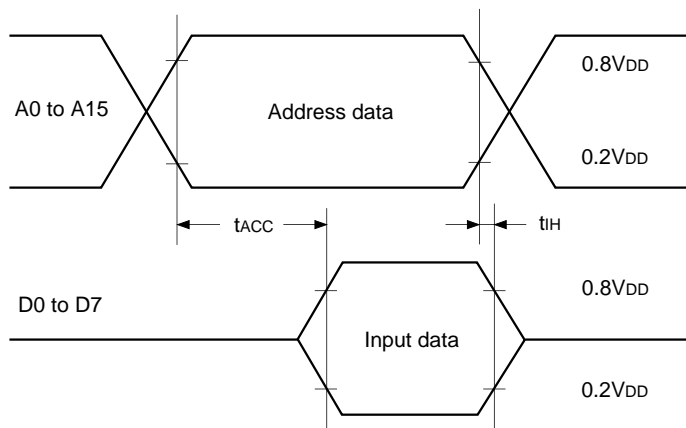


Note) NC (Pin 75) is always connected to V_{DD}.

EPROM Read Timing

($T_a = -20$ to $+75^\circ\text{C}$, $V_{DD} = 4.5$ to 5.5V , $V_{SS} = 0\text{V}$ reference)

Item	Symbol	Pin	Min.	Max.	Unit
Address → data Input delay time	t_{ACC}	A0 to A15 D0 to D7		120	ns
Address → data Hold time	t_{IH}	A0 to A15 D0 to D7	0		ns



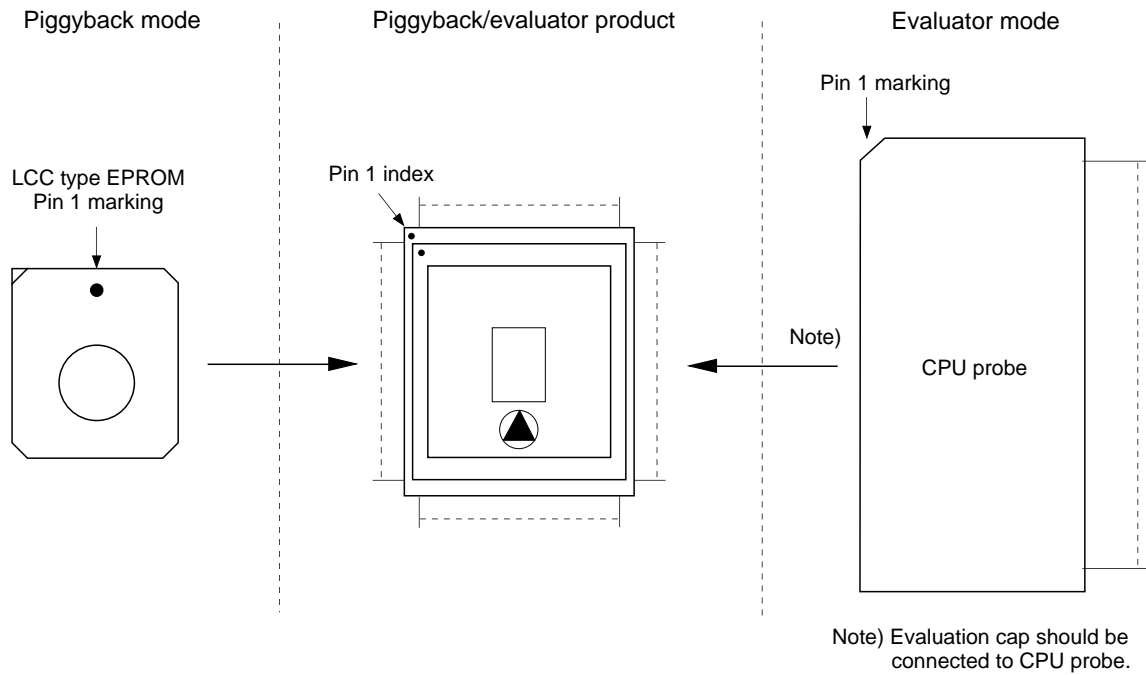
Products List

Option item	Products					
	Mask product				Piggyback/evaluator product	
	CXP83412	CXP83416	CXP83413	CXP83417	CXP83400-U01Q/R*1	CXP83401-U01Q*2
Package	80-pin plastic QFP/LQFP		0.65mm pitch 80-pin plastic QFP		80-pin ceramic PQFP	
ROM capacity	12K bytes	16K bytes	12K bytes	16K bytes	EPROM 16K bytes	
Pull-up resistor for reset pin	Existent/Non-existent				Existent	

*1 Uses LQFP package conversion adaptor (SEK-80Q-80LQ, piggyback/evaluator attached).

*2 Uses 0.65mm pitch QFP package conversion adaptor (SEK-80Q-65MM, piggyback/evaluator attached).

Piggyback mode/evaluator mode can be switched as shown below.



Package Outline Unit: mm

